

G12 Datasheet



AQL 1.5

EN455 Parts 1, 2, 3 & 4

EN388

EN374

Class 1 Medical Device

MDD 93/42/EEC



General Details

Material	PVC plastisol
Surface Finish	Powder Free
Colour	Blue
Geometry	Ambidextrous
Texture	Smooth
Cuff and Finishing	Beaded

Glove Specifications

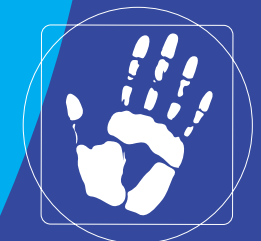
Size	Weight g/pc	Length mm	Palm Width mm	Cuff	Thickness Palm	Finger
XS	3.5	240	75 ± 5	0.06 ± 0.02	0.09 ± 0.02	0.11 ± 0.02
S	4	240	85 ± 5	0.06 ± 0.02	0.09 ± 0.02	0.11 ± 0.02
M	4.5	240	95 ± 5	0.06 ± 0.02	0.09 ± 0.02	0.11 ± 0.02
L	5	240	105 ± 5	0.06 ± 0.02	0.09 ± 0.02	0.11 ± 0.02
XL	5.5	240	115 ± 5	0.06 ± 0.02	0.09 ± 0.02	0.11 ± 0.02
Tensile properties before ageing (all gloves)				Load @ peak N	>4	
Tensile properties before aged (all gloves)				Load @ peak N	>3.8	

Performance Requirements

Test	Related Defects	Inspection Level	AQL
Water Leak at Final Release	Holes	G-1 Single Sampling Plan	1.5

Manufacturing Standards

Maunufacturing Standards	Incompliance with ISO 9001:2000
Presentation	Standard: 100 gloves per dispenser box; 10 dispenser boxes per Carton
Glove Care	Should not store under direct sunlight or at high heat and humid conditions. Single use only.



G·S·L

WWW.GLOVEMAN.CO.UK

Gloveman Supplies Ltd

Vision House, Treleigh Ind Est,

Redruth TR16 4AX

t. 01209 310734

f. 01209 314760

Blue Powder Free Vinyl Exam Gloves